

LET'S

FINISH

THE JOB

Campaign  
Nov. 28th to Dec. 6th  
1924

Masonic Temple Building Fund  
Campaign  
Trenton . . . . New Jersey

Headquarters  
7 So. Montgomery St.  
Phones 7-6071  
7-6072

TO THE CRAFT OF TRENTON, N.J.

Dear Brother:

Never in the history of the Trenton Masonic Fraternity have we faced, a more important problem than that which immediately confronts us, the urgent need of adequate Temple facilities for our Masonic "bodies.

This need must be supplied.

The unavoidable delay in actually building our Temple has terminated into our present opportunity.

"We Will Arise and Build."

Plans representing the very latest developments in Temple convenience and construction have "been drawn and approved, and the beautiful site on Willow Street will afford an ideal setting for the magnificent structure it is purposed to erect.

A fund of Three Hundred and Fifty Thousand Dollars is now asked for to complete the amount needed to proceed with the erection of our new Masonic Temple.

The hour to move forward is here. The Craft of Trenton is looking for action and your Association is ready to act the moment available funds will permit.

We believe that you are willing and anxious to share with your Brethren the responsibilities of this great movement, and that you will receive with much cordiality the visit of your Brother when he calls upon you for your expression of financial interest in your new Masonic Home.

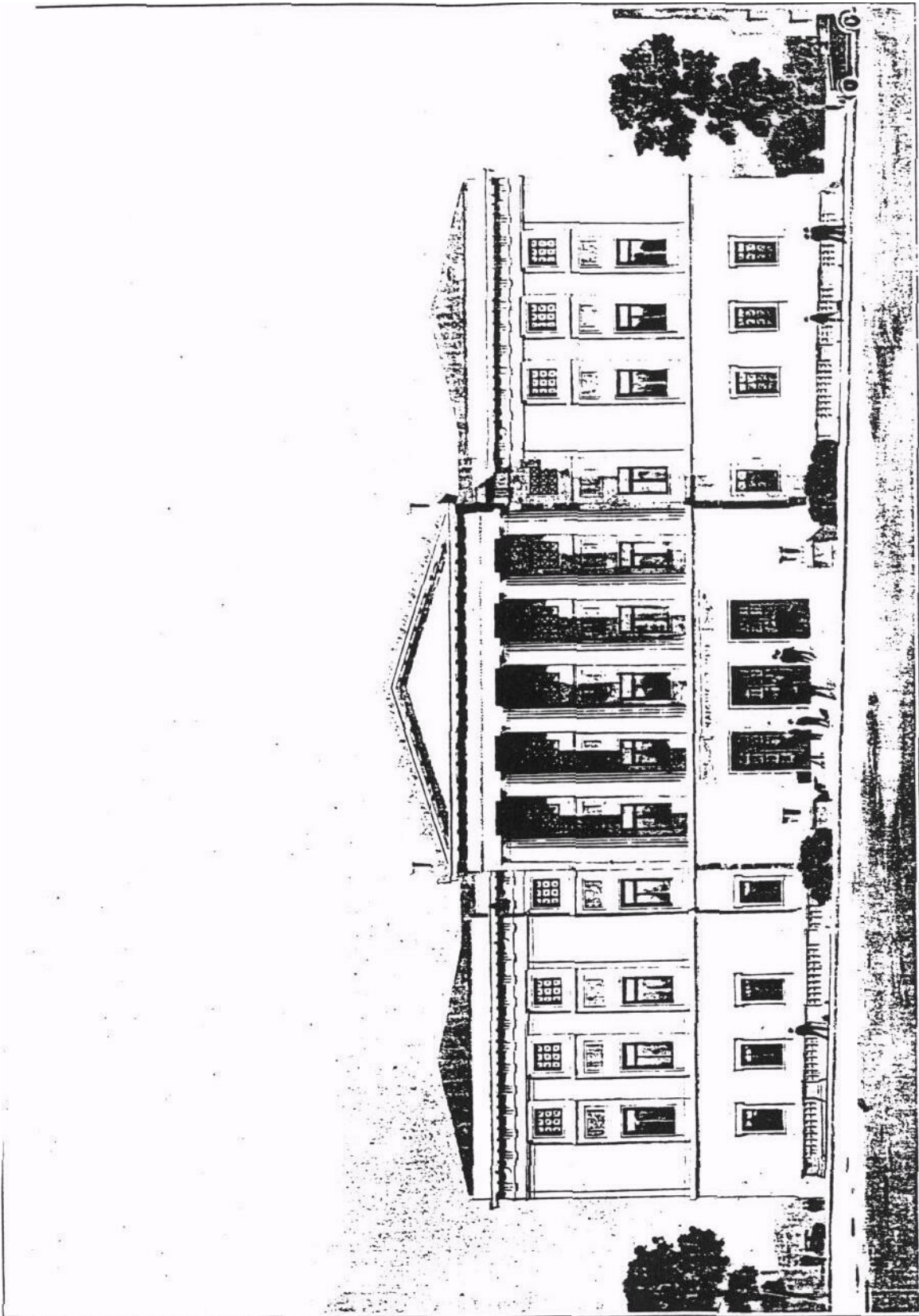
Anticipating your loyal cooperation and support, and that your response to this appeal will encourage "The Builders,"

I am

Fraternally yours,



Chairman Masonic Temple Campaign



# *Foreword*

## **1**

In presenting this message to the Masons of this community we do so with the strongest appeal possible for every member of the Fraternity in Trenton to associate himself with the great movement that lies so close to all our hearts.

Freemasonry stands for service and as one of the brotherhood you will doubtless assume your full share of responsibility in connection with securing the funds to complete the amount needed to build our new Home. Worthwhile enterprises seldom materialize except at the expense of much time, great effort and considerable self-denial. This can be accomplished with a minimum of sacrifice if the effort is united.

You will be called upon to do your part in this laudible undertaking and if our monument in this city is to be erected much depends on your help.

Will you, my Brother, do your part?

**TRENTON MASONIC TEMPLE ASSOCIATION.**

STATEMENT OF ASSETS AND LIABILITIES  
OF THE TRENTON MASONIC TEMPLE ASSOCIATION  
AS OF NOVEMBER 1ST, 1924.

ASSETS:

Cash—Mortuary Bond Account (from sale of bonds) \$2,910.96		
Cash—Redemption Fund Account (to redeem bonds) 4,470.88		
Liberty Bonds (taken instead of cash) .....		\$7,381.84
		4,650.00
		\$12,031.84
<i>Investments—</i>		
Redemption Fund Investment .....	\$34,301.51	
Mortuary Bond Investment .....	39,644.42	
Real Estate .....	43,028.17	
		116,974.10
		116,974.10
Total Assets .....		\$129,005.94

LIABILITIES:

<i>Received from Members for Bonds—</i>		
Trenton Lodge No. 5 .....	\$12,413.9	
Mercer Lodge No. 50 .....	18,818.50	
Ashlar Lodge No. 76 .....	14,095.20	
Column Lodge No. 120 .....	8,136.00	
Fraternal Lodge No. 139 .....	9,154.50	
Loyal Lodge No. 181 .....	5,662.50	
True Craftsmen Lodge No. 202 .....	5,916.00	
Sundry Lodge Liberty Bonds .....	1,650.00	
		\$75,856.69
<i>Received from Lodges to Redeem Bonds—</i>		
Trenton Lodge No. 5 .....	\$5,775.00	
Mercer Lodge No. 50 .....	8,025.00	
Ashlar Lodge No. 76 .....	5,750.00	
Column Lodge No. 120 .....	7,175.00	
Fraternal Lodge No. 139 .....	4,500.00	
Loyal Lodge No. 181 .....	3,950.00	
True Craftsmen Lodge No. 202 .....	4,875.00	
	\$40,050.00	
Less: Redemption Fund Payments .....	4,150.00	
		\$35,900.00
Capital Stock Account .....	\$16,550.00	
Surplus .....	699.25	
		\$17,249.25
		\$129,005.94

Fraternally submitted,

GEO. A. KATZENBACH,

*Treasurer.*

# *Our Situation*

## 1

Ever since the old Masonic Temple of this city passed out of the hands of the Masonic Fraternity, we have felt the need of a proper meeting place. In 1917, the Masonic Temple Association was formed and a movement started for funds to begin the erection of our Temple. A site was purchased at the unanimous choice of the Board of Directors, as well as 90% of the members of the craft, this site is now entirely free of encumbrances.

Unfortunately the great World War prevented us from going ahead at that time and the project was delayed. In 1921 the movement was again revived and another campaign was made to secure the necessary funds and about \$400,000 was pledged. Owing to the excessive cost of material and labor at that time, it was thought best to suspend operations. The situation at present regarding material and labor has not changed greatly and the prospects and that it will not change for the better in the near future, and rather than delay the work any longer, your Directors have prepared plans for a building as shown here, which it is estimated will cost approximately \$750,000, and it is our purpose to complete this amount at this time by an organized movement to secure \$350,000.

When a sufficient amount has been paid into the Treasury on the loans subscribed, the Directors will proceed immediately with the erection of our future Home.

It is imperative that we move forward, to delay now would meet with the disapproval of our members and promise nothing for the next ten years.

*“Let's Finish the Job”*

# *The Financial Plan*

## **1**

Much time and thought have been given to the "Financial Plan" which will be used to secure the Temple Building Fund.

The Masonic Temple Association, your official organization to whose judgment and action has been committed the working out of the details of the Temple Movement, has unanimously decided on the plan to be used, after careful consideration of other methods of raising Building Funds. The plan has been successful and is economically sound and practical.

A LOAN is made to the Temple Association and non-interest bearing Certificates of Indebtedness, payable to the estate of the subscriber, will be issued in the name of the Association when loans are fully paid. Members thus build the Temple and their Certificates of Indebtedness are life insurance policies, giving protection to their families.

LOANS will be received in any amount, the minimum being \$200, payable as soon as possible.

This plan offers an opportunity for every member of the Craft to express his sincere interest and loyal Masonic pride in the building of the Temple. This exalted privilege will not again be given the Lodges of Trenton in this generation. The Temple will stand throughout the years as an abiding Memorial to the hosts of "Builders" whose vision and liberality will make the building of the Temple the most notable achievement in the history of our Fraternity.

As the plan has received the unqualified endorsement of your Association, we are confident it will also receive the same hearty approval and support of every member of the Craft in Trenton.

MASONIC TEMPLE ASSOCIATION,  
OF TRENTON.

# Explanation of Building, Foyer Etc.

The exterior of the building will be built of selected Indiana limestone on a base of grey granite. The principal Facade on Willow Street is one hundred and fifty-six feet long and has an extreme height of seventy feet. This Facade is divided into three parts the two side parts having three openings, the central feature five and the end Facade seven.

Five large monolithic Doric columns four feet in diameter and twenty-nine feet high, support the pediment.

The architects, Brothers Hill and Gollner, have been successful in their efforts to combine dignity and simplicity in this memorial Temple consecrated to the future as well as the present members of the great Masonic Order that has such a glorious historic record and will be a fitting link to the brilliant future that coming generations will undoubtedly sustain.

Broad steps, flanked with balustrades, all of granite, lead up to the portals where three large bronze doors richly adorned with Masonic symbols, give access to the interior.

Passing through the massive bronze doors into the spacious Foyer we are surrounded by walls and arches of lovely old Travertine, quarried in ancient Rome, that typifies the age and solidity of the Masonic Order.

Vistas of the Great Lounge show through the arches directly in front and beyond will be seen glimpses of still other richly decorated rooms through the double rows of stately column's.

The floor is also of Travertine in which are large brass insets of Soloman's Seal and other decorative designs that were in use when our original first great Temple was built some twenty-nine centuries ago.

The proportions, materials, color and decorations of this Foyer require the most careful study by the architects as all members and their guests pass through it both on entering and departing, thus receiving their first and last impressions of the building.

Elevators and stairways lead from this room to the upper floors where the Lodge rooms are secluded and two wide marble stairs go direct to the Banquet Halls below.



## *Explanation of Basement Plan*

The Banquet Halls are connected with the first floor by two monumental stairways leading from the aisles dividing the Banquet rooms, and by two elevators which open into a large foyer.

These Banquet Halls will be arranged so that they may be divided into three rooms by closing with folding doors, and three separate banquets given at the same time, or, they may be opened into a large room having a seating capacity of 662 covers.

Adjoining are the men's smoking room and the ladies' parlor and toilet room.

The kitchen and pantry will be fully equipped with modern appliances for prompt and efficient service. The supplies will be delivered by a separate outside stairway connecting direct with the kitchen.

The boiler and ventilating equipment will be located in a room underground on a lot 25' x 97' adjoining main building and fronting on Lafayette Street. An approved vapor-vacuum system of heat will be installed.

It is the intention to provide a three unit system so that one unit will take care of two lodge rooms at one time making it unnecessary to heat and ventilate the rooms not in use.

Fresh air will be taken from above the roof, heated, washed and distributed, giving pure fresh air throughout.

Apparatus will be placed in the basement arranged to care for various sections of the building separately. Boilers will be in the basement of a power house located on Lafayette Street, keeping all dust and ashes outside of the Temple.

### BANQUET HALLS—

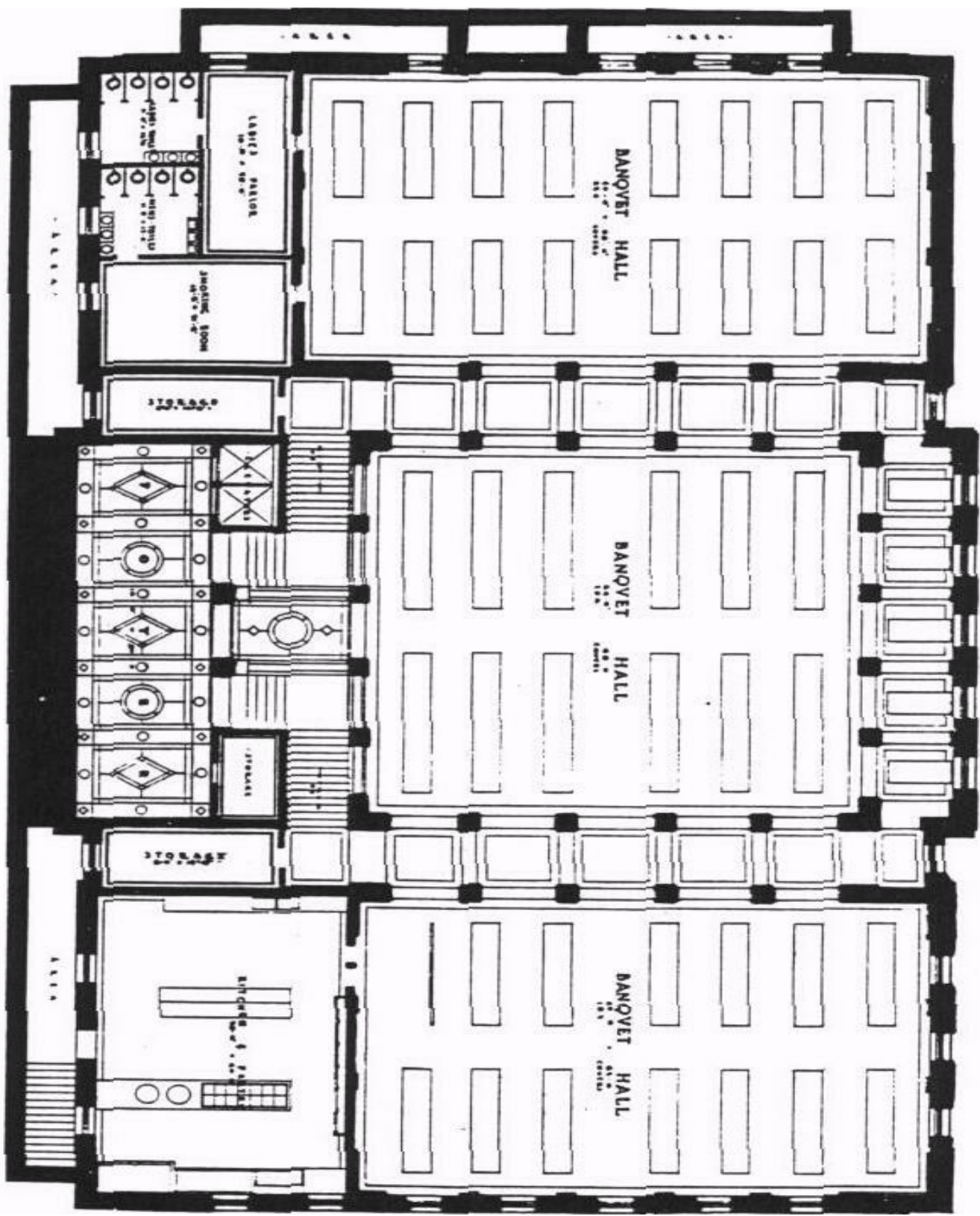
North Banquet Hall ..... 40' x 68' seats 224

Middle Banquet Hall ....64'x 68' seats 256

South Banquet Hall ..... 40' x 62' seats 128

Total Seating Capacity .... 662

• PLAN • OF • BASEMENT • FLOOR •



## *Explanation of 1st Floor Plan*

Entering on Willow Street through the bronze doors into a spacious lobby fifteen by fifty feet in size from which the elevators and stairways give access to all parts of the building. The great lounge occupies the central portion of the main first floor and in turn opens to the library, billiard room and club room, from which beautiful views of the Delaware River, Stacy Park, State Capitol and the historic old Barracks are obtained. Adjoining the lobby are the check room, trustees' room and offices. A smoking room and men's toilet room is provided and a private entrance from Front Street leads directly to the lounge.

The lounge can be used for entertaining in connection with the banquet hall, for lectures, dancing or other functions.

### PRINCIPAL ENTRANCE—

Willow Street. (Private entrance on Front St.)  
Bronze Doors (3).

### LOBBY—

15' x 50', access to—  
Elevators,  
Stairways,  
Cloakrooms,  
Offices,  
Trustee's Room,  
Lounge and Basement.

### LOUNGE—

70' x 70',  
Columns, Alcoves,  
Smoking Room.  
Gentlemen's Toilet,  
Private Offices.

### LIBRARY-

38'x40',  
S. E. corner room overlooking Delaware River.  
Books, Magazines, Writing Desks, etc.

### BILLIARD ROOM-

40'x 40', six. tables.

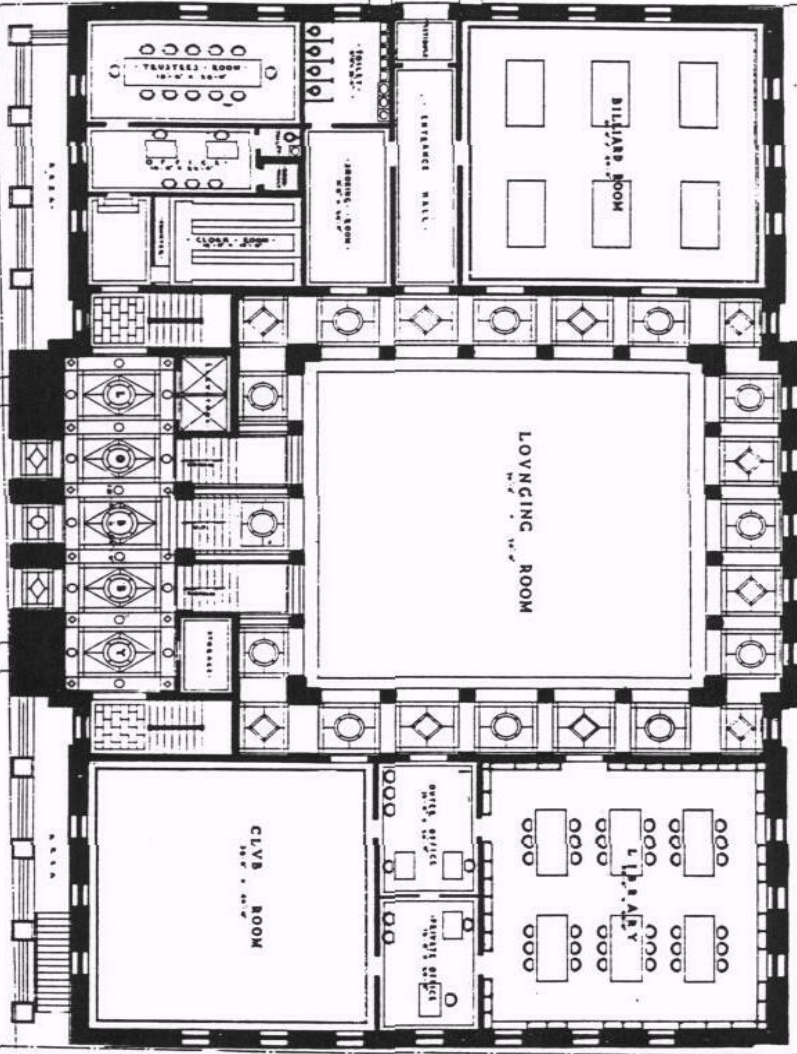
### CLUB ROOM-

40' x 40', .  
S. W. corner room, view of Stacy Park, River, Barracks, Capitol.  
Cards, Games, etc.

• FRONT STREET •

• PLAN OF GROVND FLOOR •

WILLOW STREET



## *Explanation of 2nd Floor Plan*

The second floor is reached by two elevators and two flights of stairs, all opening into a Foyer 15'x50', which is large enough to be used as a Parlor for all three Lodges.

This floor is devoted entirely to three Blue Lodge rooms each equipped with all necessary accessories such as tylers', preparation and committee rooms, toilets, etc.

Two of these rooms are each forty by seventy feet with 163 seats on the main floors and 90 additional seats in the balconies. Space for pipe organs is arranged in all Lodge rooms and the stairs to the balconies all have illuminated risers.

The third Lodge room is placed in the middle of the building and is larger than the others, being fifty-two feet wide by seventy feet long on the main floor and sixty-nine by seventy-three feet long in the balcony, with a seating capacity of 391 permanent seats that could be increased to comfortably care for five hundred people on special occasions.

Ceiling heights of all second floor Lodge rooms is eighteen feet. Concealed lighting controlled by reostats will give diffused light of intensity desired.

It is intended to design the Lodge rooms in the different Orders of Architecture, each room being called by the Order in which it is designed.

Lodges No. 1 and 3 will have pilaster treatment and Lodge No. 2 will have full columns extending from floor to ceiling.

### FOYER-

15' x 50'. Elevators, stairs. Access to all Blue Lodge Rooms.

### BLUE LODGE ROOMS NO. 1 and 3

40' x 70'. Ceiling height 18'.

Main floor seats 163

Balcony seats - 90

Total seats .... 253

Tyler, Cloak, Preparation and Committee Rooms. Toilets. Space for Organ.

Each Lodge room one of the five Orders of Architecture.

Stairs to balcony with illuminated risers.

Concealed lighting controlled with a reostat.

### BLUE LODGE ROOM NO.2

Main floor 52' x 70' seats 257

Balcony floor 69'x80' seats 134

Total seats .....391

Ceiling height 18'. Concealed lighting. Large organ.

Rooms for Tyler, Preparation, Cloak and Committee.

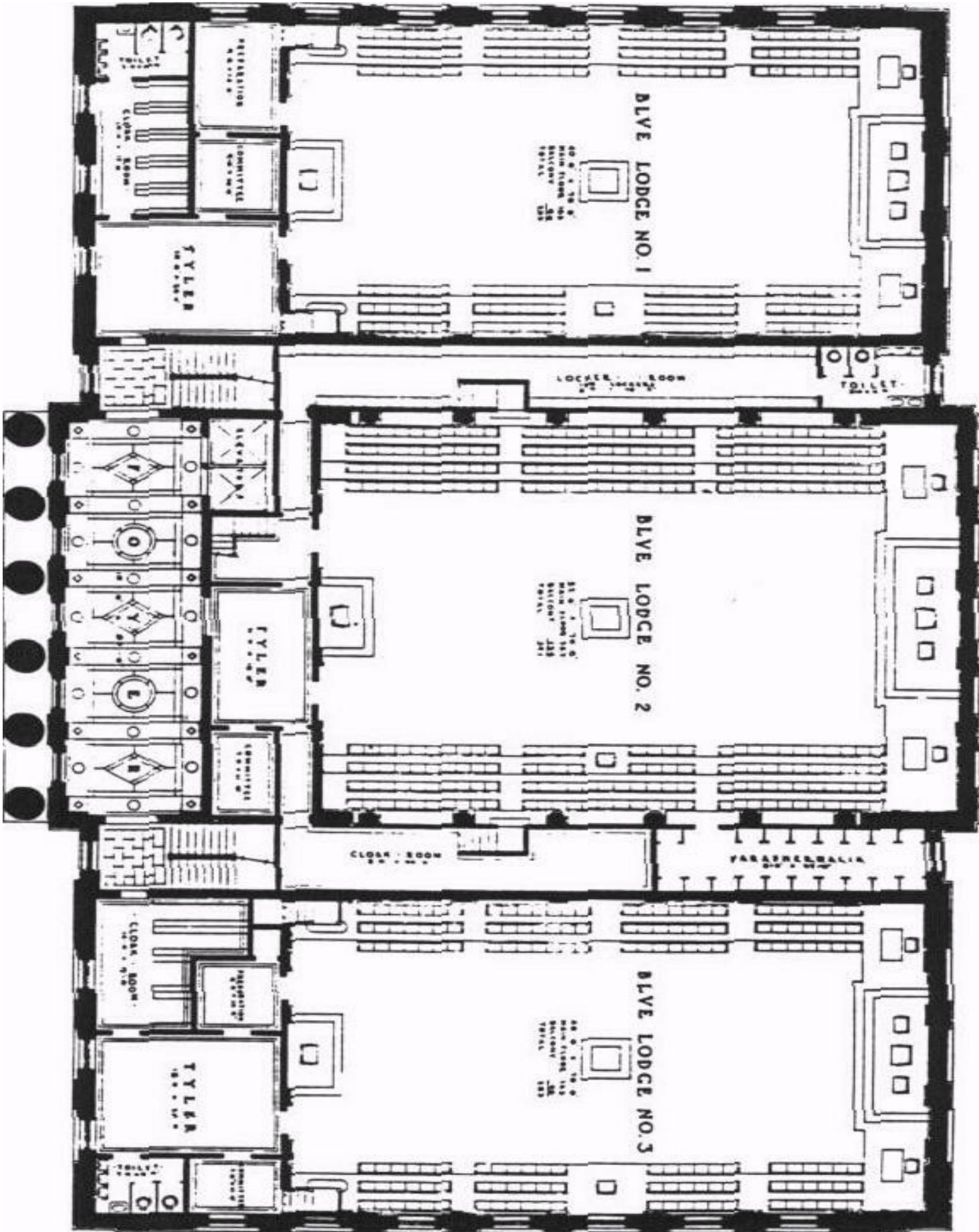
Toilet room. Locker rooms. Paraphernalia room.

### THIRD FLOOR—

Duplicate the second floor.

Chapter and Commandery have the large middle room with armory and well.

(Ceiling height 23'.)



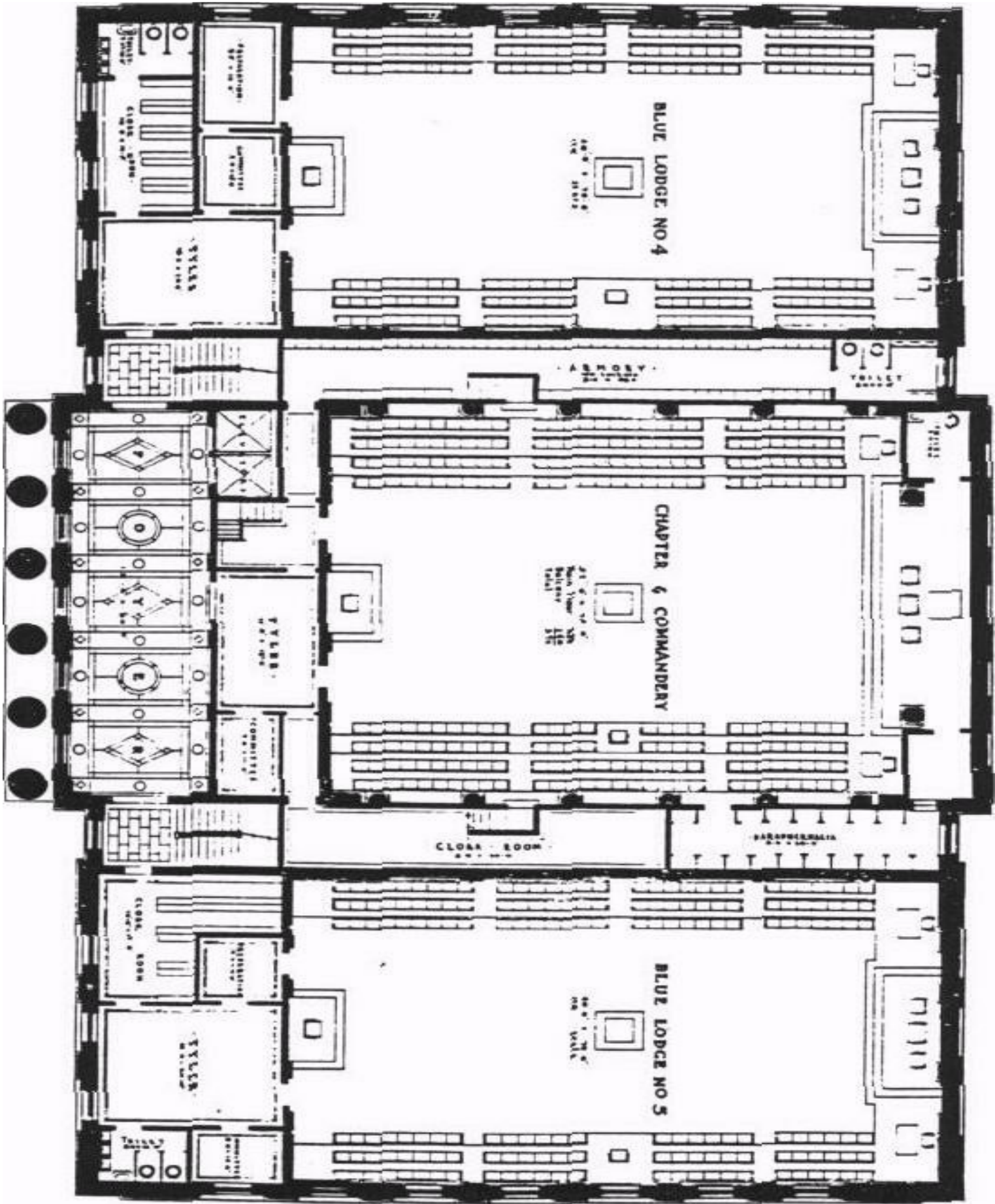
## *Explanation of 3rd Floor Plan*

The third floor is practically a duplicate of the second, but with the large central Lodge room arranged for the Chapter and Commandery. The ceiling of this room will be 23' high and the decorations in keeping with the work required.

Locker Room, Stage,  
Armory,  
Paraphernalia,  
Committee,  
Toilet,  
Preparation,  
Mezzanine Floor.

In connection with the room for the Chapter and Commandery sufficient space will be provided for Locker room, Armory, Paraphernalia room and Preparation rooms.

A mezzanine floor is provided, also a balcony in rear and space for organ, together with toilets and committee rooms.



# *The Site*

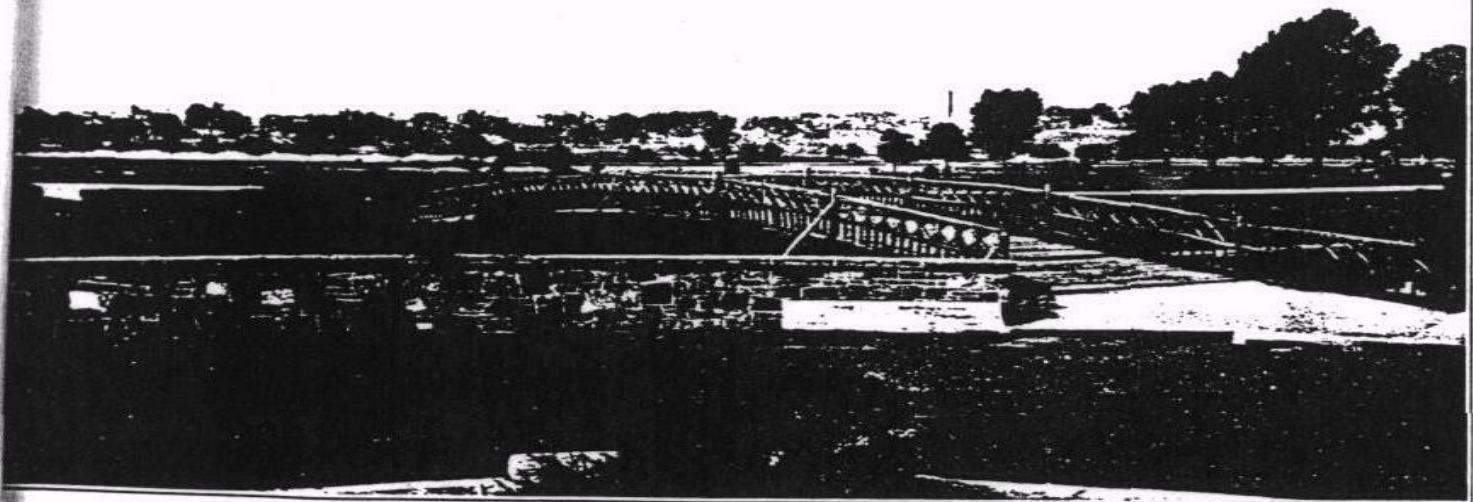


The Temple will be located on the S.E.. corner of Front and Willow Streets, opposite the Old Barracks. It will occupy a lot 108'x158', fronting on Willow Street and commanding a view of the Delaware River, Stacy Park and the State Capitol.

As the photos on the opposite page will show, the upper picture looking directly west from the site—the middle looking south and the lower view down Willow Street.

This site was selected by the unanimous consent of the Board of Directors, and over 90% of the members of the Craft.

It was selected first, because of its nearness to the centre of the city, being accessible to all trolley lines, second because of its surroundings—the Stacy-Trent Hotel adjoining and the Stacy Park in front, which will always insure an open space and a view which cannot be surpassed, and last because of its historic value as it is the exact spot where the first Masonic body met in this city.



# *Explanation of Lodge Rooms*

## *THE IONIC*

The Ionic Lodge Room will have four hundred seats and may be used by the various Lodges when they need more space than is found in the other four Blue Lodge rooms.

On the balcony level it has an extreme length of eighty feet by a width of sixty-nine feet, and is seventy feet by fifty-two feet on the main floor.

The large Ionic Columns stand free above the balcony level and below are engaged in the wells enclosing the cloak and paraphernalia rooms under the side balconies.

The high ceiling (18 feet) permits a mezzanine floor back of the organ to contain several committee rooms reached only by means of a short stairway from the Tyler's room.

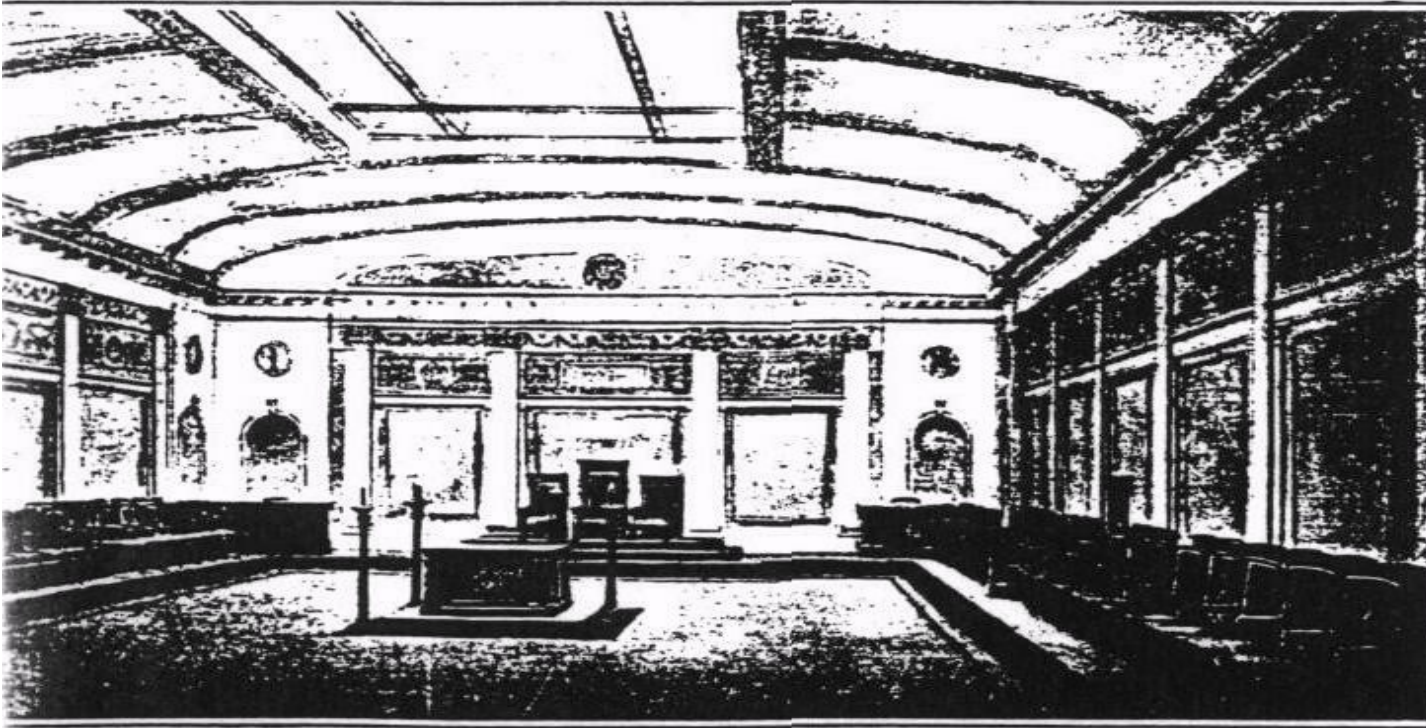
## *THE CORINTHIAN*

The Corinthian Lodge Room shown on the opposite page is well proportioned for its purpose being forty feet in width by seventy feet in length with a ceiling height of eighteen feet.

The walls are divided into panels by pilasters surmounted by an ornamental entablature. The lighting is concealed in the cornice and a soft mellow glow, restful and pleasant to the eyes will be diffused over the ceiling.

One hundred and sixty-three comfortable seats on the side with ninety more in the balcony at the west end give ample accommodations for the regular meetings.

When a larger attendance is expected the large Blue Room will be used.



# *Trenton Masonic Temple Association*

Incorporated December 22, 1921

## OFFICERS

S. E. KAUFMAN, President  
ADAM EXTON, Vice-President  
EDGAR D. COLEMAN, Secretary  
GEOORGE KATZENBACH, Treasurer  
JOHN V. B. WICOFF, Solicitor

## BOARD OF DIRECTORS

ADAM EXTON, Trenton Lodge No. 5  
THOMAS E. CROOK, Mercer Lodge No. 50  
WALTER F. SMITH, Column Lodge No. 120  
W. J. B. STOKES, Column Lodge No. 120  
S. E. KAUFMAN-, Fraternal Lodge No. 139  
JOHN S. BROUGHTON, Loyal Lodge No. 181  
ALBERT S. ROGOWSKI, True Craftsman Lodge No. 202  
FRANK L. BILES, 3x3 Chapter No. 5 R. A. M.  
J. HARRY FELL, Palestine Commandery No. 4, K. T.

## LODGES PARTICIPATING

### **TRENTON LODGE No. 5**

C. PERCY HUTCHINSON, W. M.  
EMIL SHERBAUM, S. W.  
GEORGE TURNER, J. W.

### **COLUMN LODGE No. 120**

HENRY G. BRENNEMAN, W. M.  
WILLIAM K. PAFF, S. W.  
HENRY JANSEN, J. W.

### **FRATERNAL LODGE No. 139**

LESLIE D. QUIGLEY, W. M.  
AMOS P. CARTER, S. W.  
CARROLL W. STEAD, J. W.

### **MERCER Lodge No. 50**

FREDERICK W. LANCASTER, W. M.  
NORMAN B. ZIMMERMAN, S. W.  
WALTER COLE, J. W.

### **ASHLAR LODGE No. 76**

EDWIN D. BLOOR, W. M.  
FRANK CARTWRIGHT, S. W.  
WILLIAM H. WARD, J. W.

### **LOYAL LODGE No. 181**

PHILIP D. HOLCOMBE, W. M.  
CASSEL R. RUHLMAN, S. W.  
SAMUEL B. DAVIES, J. W.

### **TRUE CRAFTSMAN LODGE No. 202**

MAXWELL A. KRAEMER, W. M.  
SAMUEL BLAUGRUND, S. W.  
PHILIP FORMAN, J. W.

### **PALESTINE COMMANDERY No. 4**

#### KNIGHTS TEMPLAR

FRANK CARTWRIGHT, COMMANDER  
JOHN G. BRIAN, RECORDER

### **3x3 CHAPTER No. 5**

#### R. A. M.

ARTHUR CARTWRIGHT, HIGH PRIEST  
JOHN D. HOWELL, SECRETARY